



Grant County Heritage Trail

Grant County, Kentucky

Prospectus
2022

Overview

DESCRIPTION

The Grant County Heritage Trail, an initiative of Fitness For Life Around Grant County (FFLAG), is focusing on the development of a 48 mile multi-surface, multi-use pathway. The multi-use pathway for Grant County will be developed in phases to connect the northern and southern border of the county with existing infrastructure and future pathways. In developing a multi-surface, multi-use pathway, a wide range of users (cyclists, walkers, joggers, equestrian riders, and other non-motorized vehicles) will be served. Also, the community will derive further health benefits by increasing physical activity via use of the county-spanning pathway; allowing people of all ages and abilities to make the healthy choice.



Need

THE NEED FOR CHANGE

Today's children could be the first in U.S. history to live sicker and die younger than their parents' generation. Lifestyle and environmental changes in recent decades make it difficult for children to eat a healthy diet and be active.

- Today, many families in Grant County do not have access to physical activity opportunities.
- Many areas in our county are unsafe for people of all ages to walk or bike, and play areas are minimal.
- Opportunities for children to be physically active during the school day has decreased dramatically.
- Adult obesity in Grant County is 3 - 7 percent higher than surrounding counties.
- Trails spur economic development and appeal to a variety of groups.
- Trails help make exercise more convenient and neighborhoods more exercise-friendly.

Investment Opportunities

INVESTMENT OPPORTUNITY

The Grant County Heritage Trail Foundation is seeking **\$350,000** in private support over the next year for the completion of Phase 1 totaling \$1,991,917.00. This money will:

- Complete Phase 1 of the pathway development
- Build sidewalks/ pathways to connect downtowns, neighborhoods, parks and schools
- Increase physical activity opportunities in our community
- Increase access to healthy food options

INVESTMENT OPPORTUNITIES OF TIME AND RESOURCES

- Provide financial donations, in-kind labor, equipment and products to reduce cost of paths and sidewalks

FOR YOUR INVESTMENT

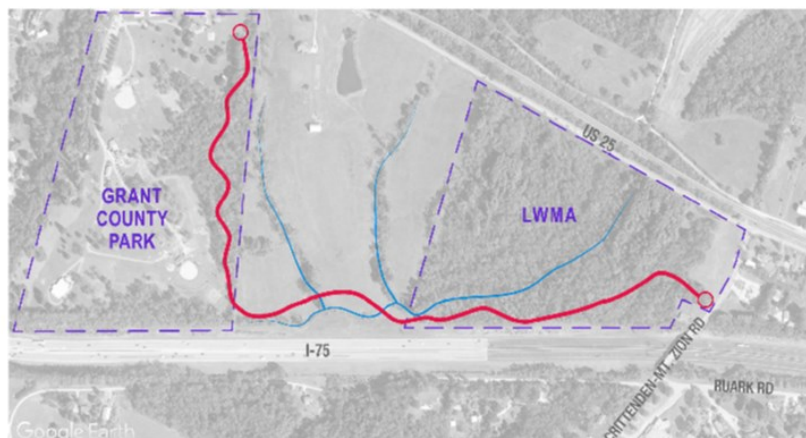
Grantors/donors will have the satisfaction of knowing that their contributions have created a healthier, more vibrant community, aided in economic development, extended the life expectancy of our children and reduced healthcare costs across the board. Additional marketing and promotional opportunities may include (but are not limited to):

- Grand opening/dedication events and media
- Marketing materials and special events via fitnessforlifegc.com/heritagetrail
- On-site signage
- Ongoing media

Product/Initiative	Est. Total Cost
Phase 1- Crittenden Sections	
Preliminary Engineering/ Design	\$160,000.00
Construction (includes utilities)	\$1,710,000.00
Construction Engineering/ Inspection	\$71,917.00
Right of Ways	\$50,000.00
Phase 1 Grand Total	\$1,991,917.00



Phase 1 (Crittenden area): The primary spine will start in the northern part of the county at the Harvesters Neighborhood continuing east along Violet Road using existing sidewalks, turning south along US-25 using existing sidewalks, continuing south along US-25 on existing sidewalk until reaching the Grant County Park where the multi-use path will be constructed and continue to run south along the east side of I-75 near the highway right of way and between US-25. This phase will end at Crittenden Mt. Zion Road.



SPONSOR LEVELS

This trail initiative is intended to span many years. The first years will create major changes in the physical environment and set the stage for the full trail development. Your sponsorship is critical for the success of this trail.

Trail Blazer	Settlers	Pioneers	Homesteaders
Up to \$999	\$1,000—\$4,999	\$5,000—\$9,999	\$10,000—\$50,000
Tax write off.	Tax write off.	Tax write off.	Tax write off.
Identified on all social media as a trail sponsor.	Identified on all social media as a trail sponsor.	Identified on all social media as a trail sponsor.	Identified on all social media as a trail sponsor.
Invited to the grand opening of the trail sections.	Identified on all media outlets as a trail sponsor.	Identified on all media outlets as a trail sponsor.	Identified on all media outlets as a trail sponsor.
	Invited to the grand opening of the trail sections.	Paver with name on it placed at Trail Head.	Invited to the grand opening of the trail sections.
		Invited to the grand opening of the trail sections.	Paver with name on it placed at Trail Head.
			Opportunity for a section of the trail to be named with your organizations name.

MEGA TRAIL SPONSOR LEVEL \$50,001 plus

This sponsor level will receive the same opportunities as the Homesteaders. However, this sponsor level will also be asked to be the Grand Marshall at trail section dedications and will be recognized and invited to a trail celebration event.

CONTACT INFORMATION

ADDRESS: PO Box 65
Williamstown, KY 41097

EMAIL: HeritageTrailGC@gmail.com

WEBSITE: fitnessforlifegc.com/heritagetrail/

Prospectus
2022